

# shrouded

---



2822 E. 17<sup>th</sup> Avenue  
Denver, CO 80206

October 7-30, 2022

info.bellprojects@gmail.com  
bell-projects.com  
@bell\_projects

Opening reception Friday, October 7, 6-10pm

---

Bell Projects presents – **shrouded** – a solo exhibition of new work by **Michael Ash Smith**. This exhibition opens Friday, October 7<sup>th</sup> and runs through October 30<sup>th</sup>, 2022. Please join us for an opening reception on October 7 from 6pm until 10pm.

Several years ago, Smith purchased a piece of fabric to use at a photo session to reflect an idea that he had. The fabric was meant to symbolize the thin veil we place around ourselves to hide the things about us we don't want others to see. That session sparked multiple series and collections of photographs such as 'archetype,' 'esoteric,' 'amaranthine,' 'convergence,' and 'catharsis.' Each of those series utilizes the fabric in some way, each time it was used to convey a different meaning.

'shrouded' is a culmination of all those collections, an ode to a simple and yet effectively tangible item that he just happened to stumble on one day in a store while browsing around. To the viewer it might suggest or mean one thing, but to Smith it has represented anxiety, depression, religion, and love. Viewers are asked to find their own meaning in the fabric, the shroud that allows us to humanly exist and hide away those features; most often the characteristics that we hesitate to show, but that heavily define us.

**Michael Ash Smith** is a Colorado-based analog photographer using unique cameras and films to create his unique style of photography. Entirely self-taught, he honed his craft in Philadelphia before moving to Boulder where he further explored the fine art side of photography. Inspired primarily by music, poetry, and paintings, Michael creates a visually ethereal and immersive world in his photographs offering viewers a glimpse into his thoughts and feelings.



1. **shrouded four** (2022)  
 Photograph; Konica Film, Rollei 2.8  
 Camera  
 Giclee print on Hahnemuhle  
 310gsm cotton rag paper  
 10 x 10"; 23 x 19" framed  
 \$550



2. **shrouded five** (2021)  
 Photograph; Konica Film, Rollei 2.8  
 Camera  
 Giclee print on Hahnemuhle  
 310gsm cotton rag paper  
 10 x 10"; 24 x 18" framed  
 \$550



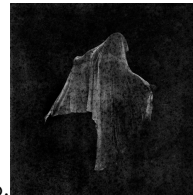
3. **shrouded eight** (2022)  
 Photograph; Konica Film, Rollei 2.8  
 Camera  
 Giclee print on Hahnemuhle  
 310gsm cotton rag paper  
 12 x 12"; 31 x 25" framed  
 \$625



4. **shrouded one** (2022)  
 Photograph; Konica Film, Rollei 2.8  
 Camera  
 Giclee print on Hahnemuhle  
 310gsm cotton rag paper  
 8 x 8"; 21 x 18" framed  
 \$425



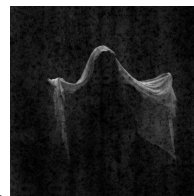
5. **shrouded seven** (2021)  
 Photograph; Konica Film, Rollei 2.8  
 Camera  
 Giclee print on Hahnemuhle  
 310gsm cotton rag paper  
 12 x 12"; 27 x 23" framed  
 \$625



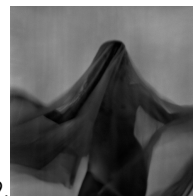
6. **shrouded eleven** (2022)  
 Photograph; Konica Film, Rollei 2.8  
 Camera  
 Hand toned cyanotype print on  
 300gsm cotton rag paper  
 8 x 8"; 21 x 17" framed  
 \$475



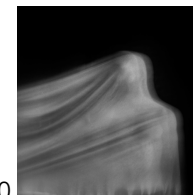
7. **shrouded ten** (2022)  
 Photograph; Konica Film, Rollei 2.8  
 Camera  
 Hand toned cyanotype print on  
 300gsm cotton rag paper  
 8 x 8"; 18 x 14" framed  
 \$475



8. **shrouded twelve** (2022)  
 Photograph; Konica Film, Rollei 2.8  
 Camera  
 Hand toned cyanotype print on  
 300gsm cotton rag paper  
 8 x 8"; 21 x 17" framed  
 \$475



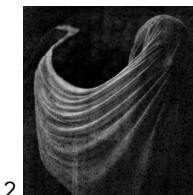
9. **shrouded three** (2022)  
 Photograph; Konica Film, Rollei 2.8  
 Camera  
 Giclee print on Hahnemuhle  
 310gsm cotton rag paper  
 8 x 8"; 20 x 17" framed  
 \$425



10. **shrouded two** (2022)  
 Photograph; Konica Film, Rollei 2.8  
 Camera  
 Giclee print on Hahnemuhle  
 310gsm cotton rag paper  
 8 x 8"; 19 x 15" framed  
 \$425



11. **shrouded nine** (2022)  
 Photograph; Konica Film, Rollei 2.8  
 Camera  
 Giclee print on Hahnemuhle  
 310gsm cotton rag paper  
 12 x 12"; 30 x 26" framed  
 \$625



12. **shrouded six** (2022)  
 Photograph; Konica Film, Rollei 2.8  
 Camera  
 Giclee print on Hahnemuhle  
 310gsm cotton rag paper  
 10 x 10"; 23 x 18" framed  
 \$550