

# There's Been A Murder!



2822 E. 17<sup>th</sup> Avenue  
Denver, CO 80206

info.bellprojects@gmail.com  
bell-projects.com  
@bellprojects

**March 2 - April 28, 2024**  
Saturdays & Sundays 12-5pm, or by appointment

**Opening reception Saturday, March 2, 6-10pm**

For Mo' Print 2024, *Bell Projects* presents – ***There's Been A Murder!*** – the *Whodunit?* series of 36 monoprints and installation by **Gregory Santos**. This exhibition opens Saturday, March 2 and is on view through April 28, 2024. Please join us for an **opening reception on March 2nd from 6pm until 10pm.**

*Whodunit?* is a series of thirty-six unique monoprints combining the processes of lithography and screenprint. The imagery is of the six murder weapons from the Parker Brothers® board game Clue® and directly references the illustrated playing cards from the 1986 North American version.

While Clue® was originally marketed as "The Great New Detective Game," then as "The Great New Sherlock Holmes Game," and also "The Great Detective Game," one of its byproducts beyond developing one's skills of reasoning, examination and determination, was introducing the concepts of deceit, suspicion, and murder to children. To his recollection, Santos was not allowed to watch the news as a child, and instead learned about the notion of murder from this board game.

The 1986 version of Clue® is what he grew up playing with his family in suburban Long Island. As a child of 1980s, the trends of his childhood have now cycled back around through American culture in adulthood. This series highlights the somewhat lightheartedness that was awarded to the act of murder and how it was portrayed in a family board game.

Each weapon is depicted in six different colorways. Using a different color combination for each of the six characters from the game, each weapon icon is given different emotion, weight and presence. These icons are layered over patterned backgrounds created from combinations of readily available items:

- Runts® candy (banana)
- Rice Krispies®
- upholstery tacks and staples
- pulverized Jolly Rancher® (cherry)
- popping corn kernels
- Tic-Tac® fruit adventure mints
- beer can and soda pop can pull tabs
- Halloween decorations (snakes and spiders)
- jewelry beads
- mesh bag for onions
- edible sugar decorations
- Sugar In The Raw® turbinado cane sugar
- wheat grass (varied types)
- peacock feathers
- confetti
- millet
- bubble wrap
- daisy petals

**Gregory Santos** (b. 1979, New York) is an abstract artist and professional printer specializing in lithography and screen printing. In 2015 he relocated from New York City to Denver, Colorado. His studio practice is based out of Art Gym Denver where he has served as the founding Printmaking Director since Art Gym's opening in 2015. He was the organizing Chair of Denver's Month of Printmaking biennial event from 2016 to 2020.

As a collaborative printer he's made editions for artists: Tony Ortega, Gigi Chen, Dinh Q. Lê, and Sanford Biggers. He's also printed editions for Cecily Brown, Jill Moser, Guillermo Kuitca, Robert Kushner, Mickalene Thomas, and Helen Frankenthaler. Gregory created *Mixed Grit* in January 2019. Through this unique project he's printed crayonstone lithographs for thirty-six artists from across the country.

He completed the Printer Training Program at the Tamarind Institute for lithography, and holds a Master of Arts degree from New York University as well as a Bachelor of Fine Arts degree in Printmaking from Syracuse University.



*I Suspect Mrs. Peacock with the Revolver* (2023)  
Monoprint (Lithography, Screenprint)  
19 x 15"  
\$700



*I Suspect Miss Scarlet with the Candlestick* (2023)  
Monoprint (Lithography, Screenprint)  
19 x 15"  
\$700



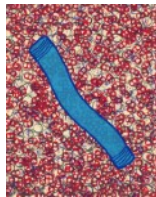
*I Suspect Mrs. White with the Wrench* (2023)  
Monoprint (Lithography, Screenprint)  
19 x 15"  
\$700



*I Suspect Professor Plum with the Lead Pipe* (2023)  
Monoprint (Lithography, Screenprint)  
19 x 15"  
\$700



*I Suspect Colonel Mustard with the Rope* (2023)  
Monoprint (Lithography, Screenprint)  
19 x 15"  
\$700



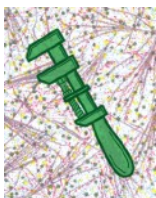
*I Suspect Mrs. Peacock with the Lead Pipe* (2023)  
Monoprint (Lithography, Screenprint)  
19 x 15"  
\$700



*I Suspect Mr. Green with the Knife* (2023)  
Monoprint (Lithography, Screenprint)  
19 x 15"  
\$700



*I Suspect Colonel Mustard with the Candlestick* (2023)  
Monoprint (Lithography, Screenprint)  
19 x 15"  
\$700



*I Suspect Mr. Green with the Wrench* (2023)  
Monoprint (Lithography, Screenprint)  
19 x 15"  
\$700



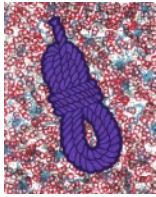
*I Suspect Miss Scarlet with the Revolver* (2023)  
Monoprint (Lithography, Screenprint)  
19 x 15"  
\$700



*I Suspect Professor Plum with the Candlestick* (2023)  
Monoprint (Lithography, Screenprint)  
19 x 15"  
\$700



*I Suspect Mrs. White with the Knife* (2023)  
Monoprint (Lithography, Screenprint)  
19 x 15"  
\$700



*I Suspect Professor Plum with the Rope* (2023)  
 Monoprint (Lithography, Screenprint)  
 19 x 15"  
 \$700



*I Suspect Mr. Green with the Revolver* (2023)  
 Monoprint (Lithography, Screenprint)  
 19 x 15"  
 \$700



*I Suspect Miss Scarlet with the Rope* (2023)  
 Monoprint (Lithography, Screenprint)  
 19 x 15"  
 \$700



*I Suspect Mrs. White with the Lead Pipe* (2023)  
 Monoprint (Lithography, Screenprint)  
 19 x 15"  
 \$700



*I Suspect Mrs. Peacock with the Wrench* (2023)  
 Monoprint (Lithography, Screenprint)  
 19 x 15"  
 \$700



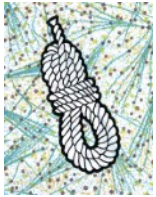
*I Suspect Colonel Mustard with the Knife* (2023)  
 Monoprint (Lithography, Screenprint)  
 19 x 15"  
 \$700



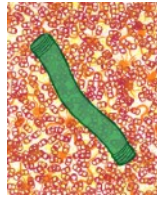
*I Suspect Mrs. Peacock with the Candlestick* (2023)  
 Monoprint (Lithography, Screenprint)  
 19 x 15"  
 \$700



*I Suspect Professor Plum with the Revolver* (2023)  
 Monoprint (Lithography, Screenprint)  
 19 x 15"  
 \$700



*I Suspect Mrs. White with the Rope* (2023)  
 Monoprint (Lithography, Screenprint)  
 19 x 15"  
 \$700



*I Suspect Mr. Green with the Lead Pipe* (2023)  
 Monoprint (Lithography, Screenprint)  
 19 x 15"  
 \$700



*I Suspect Colonel Mustard with the Wrench* (2023)  
 Monoprint (Lithography, Screenprint)  
 19 x 15"  
 \$700



*I Suspect Miss Scarlet with the Knife* (2023)  
 Monoprint (Lithography, Screenprint)  
 19 x 15"  
 \$700

## NORTH WALL



*I Suspect Colonel Mustard with the Revolver (2023)*  
Monoprint (Lithography, Screenprint)  
19 x 15"  
\$700



*I Suspect Professor Plum with the Wrench (2023)*  
Monoprint (Lithography, Screenprint)  
19 x 15"  
\$700



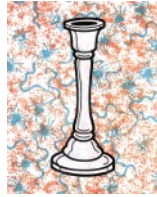
*I Suspect Mrs. Peacock with the Rope (2023)*  
Monoprint (Lithography, Screenprint)  
19 x 15"  
\$700



*I Suspect Miss Scarlet with the Lead Pipe (2023)*  
Monoprint (Lithography, Screenprint)  
19 x 15"  
\$700



*I Suspect Miss Scarlet with the Wrench (2023)*  
Monoprint (Lithography, Screenprint)  
19 x 15"  
\$700



*I Suspect Mrs. White with the Candlestick (2023)*  
Monoprint (Lithography, Screenprint)  
19 x 15"  
\$700



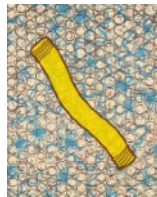
*I Suspect Professor Plum with the Knife (2023)*  
Monoprint (Lithography, Screenprint)  
19 x 15"  
\$700



*I Suspect Mr. Green with the Candlestick (2023)*  
Monoprint (Lithography, Screenprint)  
19 x 15"  
\$700



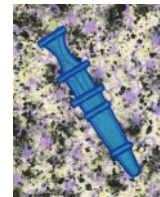
*I Suspect Mr. Green with the Rope (2023)*  
Monoprint (Lithography, Screenprint)  
19 x 15"  
\$700



*I Suspect Colonel Mustard with the Lead Pipe (2023)*  
Monoprint (Lithography, Screenprint)  
19 x 15"  
\$700



*I Suspect Mrs. White with the Revolver (2023)*  
Monoprint (Lithography, Screenprint)  
19 x 15"  
\$700



*I Suspect Mrs. Peacock with the Knife (2023)*  
Monoprint (Lithography, Screenprint)  
19 x 15"  
\$700

## EAST WALL